

MAP Check

PROCESS CONTROL OXYGEN ANALYSER

High Accuracy Process Control Gas Analysers with Solid State or Electrochemical Sensors

MAP Check 9001 is a line of state-of-the art oxygen analysers which especially targets the industrial process control applications and the demand for problem free, fast responding precision analysis.

MAP Check 9001 can be fitted with a solid state sensor or with an electrochemical sensor. The analyser is digitally controlled, featuring full self-diagnostics with alarm output, user programmable gas concentration alarms and various possibilities for analyser-process communication. Operation and monitoring of the analyser either directly via the display/keyboard or via PC and a special developed Windows based software, which also offers data logging.

Due to new sensor system design, MAP Check with electrochemical sensor is nearly just as fast as with the ceramic solid state sensor and does not become saturated by the ambient air oxygen. Therefore, independent of sensor type, MAP Check represents a breakthrough in user-friendliness.

**ADVANTAGES**

- Extremely fast response time
- User-friendly - no sensor saturation
- Self-diagnostics - detection of vital function parameters, such as sample flow
- Broad user interface - menus with many set-up possibilities
- 2 oxygen concentration alarms
- RS 232 and 2 relays for gas alarms and system alarms
- Possibility for remote control via PC

PBI Dansensor

HIGHLIGHTS

Super fast responding oxygen analysers - solid state or electrochemical sensors without saturation problems when exposed to high oxygen

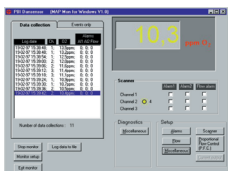


Option: Proportional gas flow control

MAP CON maintains with high accuracy a user defined oxygen level in a process via a control signal feed back from the analyser. Thus, the oxygen level measured is continuously compared to the required level and the gas purging is adjusted proportionally.

Option: Multiplex measuring

MAP Check is available for multiple measuring points - from 2 - 4 points. In the analyser - or via the remote PC control software (see below) various measuring points can be set up. The multiplexer can be set up as sample per measuring point, switching time between the points and point priorities. In case of an O₂ alarm in a measuring point the alarm will be locked until the next measurement in that specific point.



Option: Windows based PC software

The user interface for MAP Check can either be via the analyser display and keyboard

or via MAP Mon, which is a Windows based PC software for remote control. This software offers a very easy approach to set-up and viewing of the analyser, flow controller and multiplexer together with data logging.



TENDRING pacific
www.tendringpacific.com

Norfolk House, Great Chesterford Court, Great Chesterford, Essex CB10 1PF
T: (44) 0870 240 1886 F: (44) 0870 240 1887 E: sales@tendringpacific.com

SPECIFICATIONS:

Standard specification - MAP Check with solid state sensor:

Sensor type:	Ceramic solid state
Measuring range:	100% - 0,1 ppm O ₂
Operation temperature:	727 C
Heating up time:	10 min. - full specs. after 20 min.
Calibration intervals:	1 year (if option: "No pump" - 3 years). Semi automatic calibration
Calibration points:	4, plus atmospheric air
Reference gas:	Atmospheric air
Sensor response time:	50 mSecs.
System response time:	20,9% O ₂ to 10 ppm in 2 minutes
Accuracy:	Better than +/-1% of reading in cal. range
Sensor flow:	Optional: 200, 500 or 1500 ml/min
Sensor flow detection:	Monitors correct gas flow through sensor
Sample gas supply:	Built-in sample pump - or optional, no pump pressurised sample flow adjusted to 2 bar
User interface:	Menu operated for analyser setup and function monitoring
Display:	4 digit, red LED display
Keyboard:	4 front soft keys
Self-diagnostics:	Monitors vital functional parameters
Alarms:	2 gas concentration alarms, 1 system fault alarm, 1 flow alarm
Alarm connections:	Max. 48 VDC, 1 A (common N.O. and N.C.)
Current output:	Optional: 0/4 - 20 mA or 0-10 V, user defined set up of scale
Signal input:	10 - 32 VDC, external measuring control signal. Consumption 10mA.
Cabinet & display:	Stainless steel. Foil front plate

Optional: MAP Check with electrochemical sensor

Sensor type:	Electrochemical Clark cell type
Measuring range:	20,9% - 1 PPM O ₂
Calibration intervals:	9 Months
Calibration points:	5 points
Sensor response time:	1 sec.
System response time:	20,9 % O ₂ to 10 ppm in approx. 3 minutes
Accuracy :	20,9 % - 1000 ppm, O ₂ : +/- 2% relative 1000- 1 ppm O ₂ : +/- 2% relative
Saturation:	The sensor is automatically protected against saturation from high O ₂ (20,9%)
Size:	270x177x377 mm (WxHxD)



PBI-Dansensor A/S, Roennedevej 18
DK-4100 Ringsted, Denmark

Tel.: +45 57 66 00 88. Fax: +45 57 66 00 99
www.pbi-dansensor.com . info@pbi-dansensor.com